



□

()) ,

1	2	3
45	2	2

7 , 89 , : 7 , : , 0 : 8 9.

(. - ,

□

8 0 : , 8 8- , 9 :

. 4 (.) , 5	. 4)	. 2 2	2 . 1 4 4
4	. . 4 1 . 4 . . 4 1 1 3 4 1 . 1 3 1 1 4	4 5 1 - . 4 4 1 . 1 4 . 4 3 3 1 4 1. 1 4	D . 4 1) 13 . - 4 11 4 1 . . 1 . . 1 1 4 (2 , 4 4 4 4 1 . . 4 13 . 1



()) ,

1			
2		3. -	
4		2	2

			1 . 4 4 4 13 1 1 4 □
4	. 4	4 - 3 4 3 4 - 3 4 . 4	D 4 1 3 4 3 4 4 1 4 3 3 4 4 4 4 4 4 4 4
2 4 4 4 4 4 4 1 4	2 4 . 4 4 1 1 4 1 . 3 1 4 1 4 2 4 . 4 4 4	D 4 4 1 1 4 1 4 4 1 4 1 1 4



()) ,

<p>1 2 3</p>			
5		2	2

		1	
		2	
		1	

, 8 7: , : , 0: 8 9. , :

5	1/2	D	-	.
		1		
		3		
		1		



()) ,

1			
2		3. -	
4	6	2	2 ;

		<p>1. .</p> <p>3 3 3</p> <p>4</p> <p>6 4</p> <p>4</p> <p>3 6 6</p> <p>- 3 3 . 6</p> <p>4</p> <p>3 4 6</p> <p>4</p>		
)		<p>4</p> <p>3</p> <p>2 4</p> <p>1 1</p> <p>4</p> <p>13 . 13</p> <p>1. 3 3 --</p> <p>3 3 6</p>	- 4	.
.		<p>4</p> <p>1. 3</p> <p>1 .</p>	- 4	.



()) ,

- .

. . . 1 2 . . - 3. -

A 8 2 . : : : : : : : 2 ; : : : :

<p>. 1 - a b - a</p>	<p>1 . 1 3 1. 3 1 1 2 8 1 1 1 1 1 1 . 1 1</p>		
--------------------------	---	--	--

. 3 3 .
1 2 1 1 - 1
(- ,
1 .
1 . .
8 2
, . 1
, 3 . 1
©□)) 1



()) ,

1 2 . . 3. -			
4	c	2 9 . ::::: :	2 ; :::::

. 3 1 1
 b, 3 1 . 1
 ,
 M 3
 2 1 1 4
 , 1 .
 b, 1 1
 , d
 M e d 1
 , .
 .
 , . 19
 , 1 . 1
 , 1 4 . 3
 . 4 (,3 . 4 3
 ,
 , .
 .
 , . 19
 , . 3 1 . 3
 , 3 -
 ,
 M . -



()) ,

0 1 2 0 .			
. 3. -			
))			
5	65	2 . :::::::::::	2 :::::

56 2

, 6

 , d 1
 , 1 1 3 E 1 1 6
 , . 3 3 E 1 . 3 0 6
 . 3 - 6
 , 6
 , . 0 - 0 6

56 2

, 6
 i
 , d 1
 , 1 1 3 E 1 1 6
 , 3 3 62
 . 6 3
 , 6
 , . 0 - 0 6 6

56 2

, 6
 1
 , 2 E 1
 1 . 3 3 6 62
 , 3
 . 6 3
 , 6 6



() ,

- . - / /			
1 . / /		2 . / /	
3. - / /		/ /	
/ 4	7	2 / . ::::: :::::	2 :::::

,
, . -

TF

,)

, / /

, / . 3 1 . 3

/ . 3 - / /

,
, . -
3

8

. / /

, 1 / . /

, / . 3 1 . 3

/ . 3 - / /

, . / / /

, / /

8

7 / /

, 1 / . /

, / . 3 1 . 3

/ . 3 - / /

, . / / /

, / 3. . 1 - 1

2 // / . 4 1



()) ,

1 / /			
2 / /		3. - / / /	
/		2 / . ::::::::::: 2 :::::	

, / . /

1 / /

,. // / . e

, / . 3 E 1 . 3

/ . 3 - / /

, . / / / /

M / / / 3

/ . . / / / . /

/ / / - /

8 4 M

/ .

, - . a

2 / /

2 / 1 / . / . .

3 3

b / .

M

2 . .

3 4566

:1

2 / /

2 / 1 / . / . .

3 3

b .

3 1 E /

1. / 3 .

. / 3 . . 3 . . 3

/

M

2 . .

3 4566

i (3 . m M M M Ma , n . // . //



()) ,

0	1	2	3
5	5 8	2	2

b 3 0

M 2

o

A 8 1

M b3

82

(if a,

b) 3 E (, 3

2

2

b 2



()) ,

1 2 3. -			
45	65	2	2

6 . 1 1 . . 4

6 2

6 . 1 4

6 3. . . 4

b6 6

6 2 . 1 . 1 1 4

6 . 1 1 4

6 2

6 . 1 4

6 3. . . 4

b6 6

6 . 1 6 1 4

b

8

2

6 2

6

6 2 3 3 6 1 . . . 4

b6) 3 d 6 (4 / 4

3 3 6

6 3 4

?

6 1

6 . . . 1

(1333, (1333,

b6 . . .

6 . 1



()) ,

1 2 . . - 3. -			
5		5	
2		2	

1 1
 2 . 1
 3 4 66

? :

b 1 1
 3

2 -
 3 (,3 42

:

2 . . 1 . 3 - .
 D 1 .

. . 1 . . .
 3 4566

8 62

() , .
3

1 . 3
 3 - I
 3. 1 I
 3 I 3. 1 .



() +) ,

0	1	2	0	3
45	65C 8	2 9	2 ;

4 . 1 . 1
 4 . 9 1 3 . 1 .
 1 1 . 1
 4 . 1 . 1 1 4 1 3 1
 4 3. 1. 1 3 - 1 6

D) . 4 3
 2 . 1 3 (3 ,
 4 . 4 - . 1
 - 0 1 . 0 3
 4 3 . 0 3 3 0 3
 4 - . - 6 .

D 4 -
 6
 1 4 - 0
 5 6 . 3 1 1 0 - = =
 = 5A6 5A(1 3 . 1 1 0 -

0 56 1 4 -
 3 6

•			
3			



()) ,

1 2 3 -

7

2

2

			<p>2</p> <p>...</p> <p>K</p>
			<p>.</p>
<p>E</p>		<p>Simulation: Simulation case 1: Element 1256 Element 1256: 1256 elements Element 1256: 1256 elements Element 1256: 1256 elements Element 1256: 1256 elements Element 1256: 1256 elements</p>	<p>D -</p> <p>1</p> <p>1</p> <p>D</p> <p>D</p> <p>E</p>



()) ,

1

2

3.

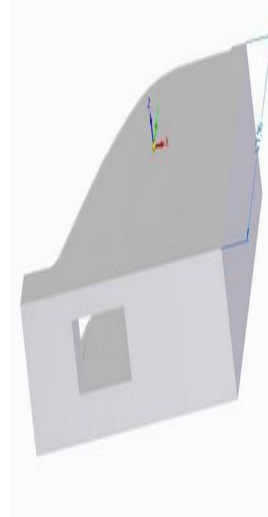
8

2

2

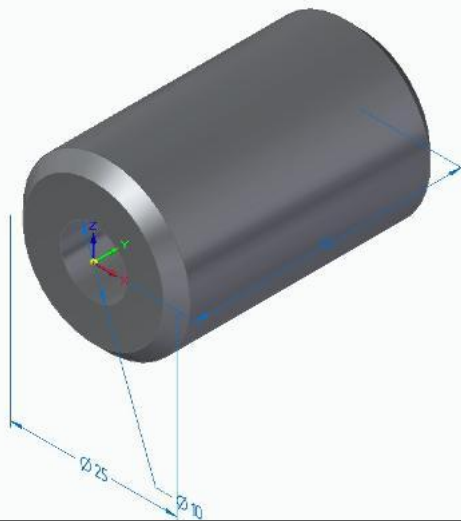
4

)

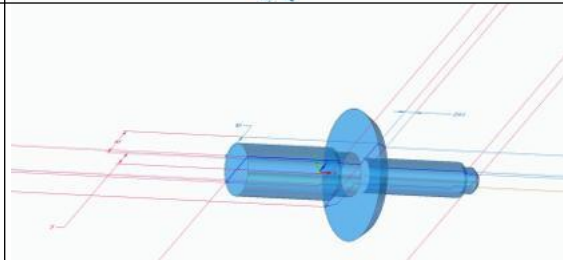


1

2



2





()) ,

1

2

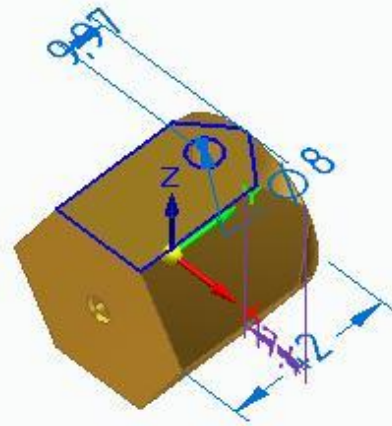
3

2

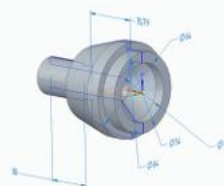
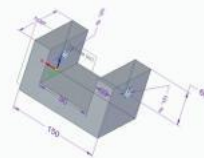
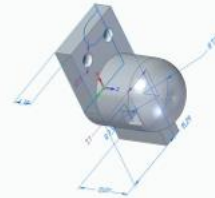
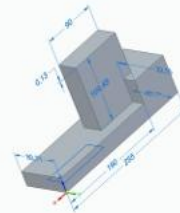
9

2

5




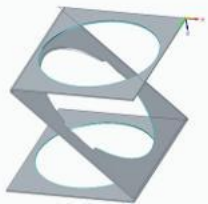

P





()) ,

0	1	2	0	3
45	68= 78	2	9	2

	/ / 4		.
	/		.
4			.
	/	F	
	/ / 5 / 6 .	56 86 . a	.
	8	76 2 / / 4	/ /
	1 .	6 / /	
	- 5=== 8	6 2 / . 4	
		49 /	
		6 2 9	
		T6 2 / 2 2 . 4	
		0 6	
		6	
		6 .	



() ,

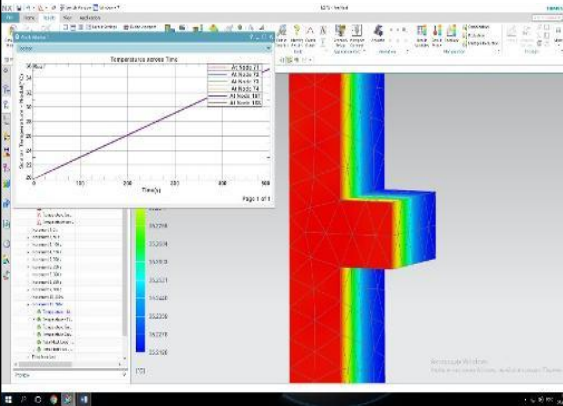
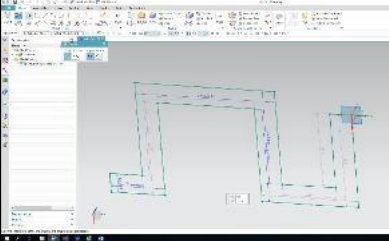
0	1	2	3
45	657	2	2

/	<p>6</p> <p>s = 3</p>	<p>56</p> <p>6</p> <p>hm_</p> <p>a</p> <p>76 2 / / 4</p> <p>6 / /</p> <p>6 2 / / 4</p> <p>4 /</p> <p>6 2</p> <p>T6 2 / 2 2 . 4</p> <p>0 6</p>	



()) ,

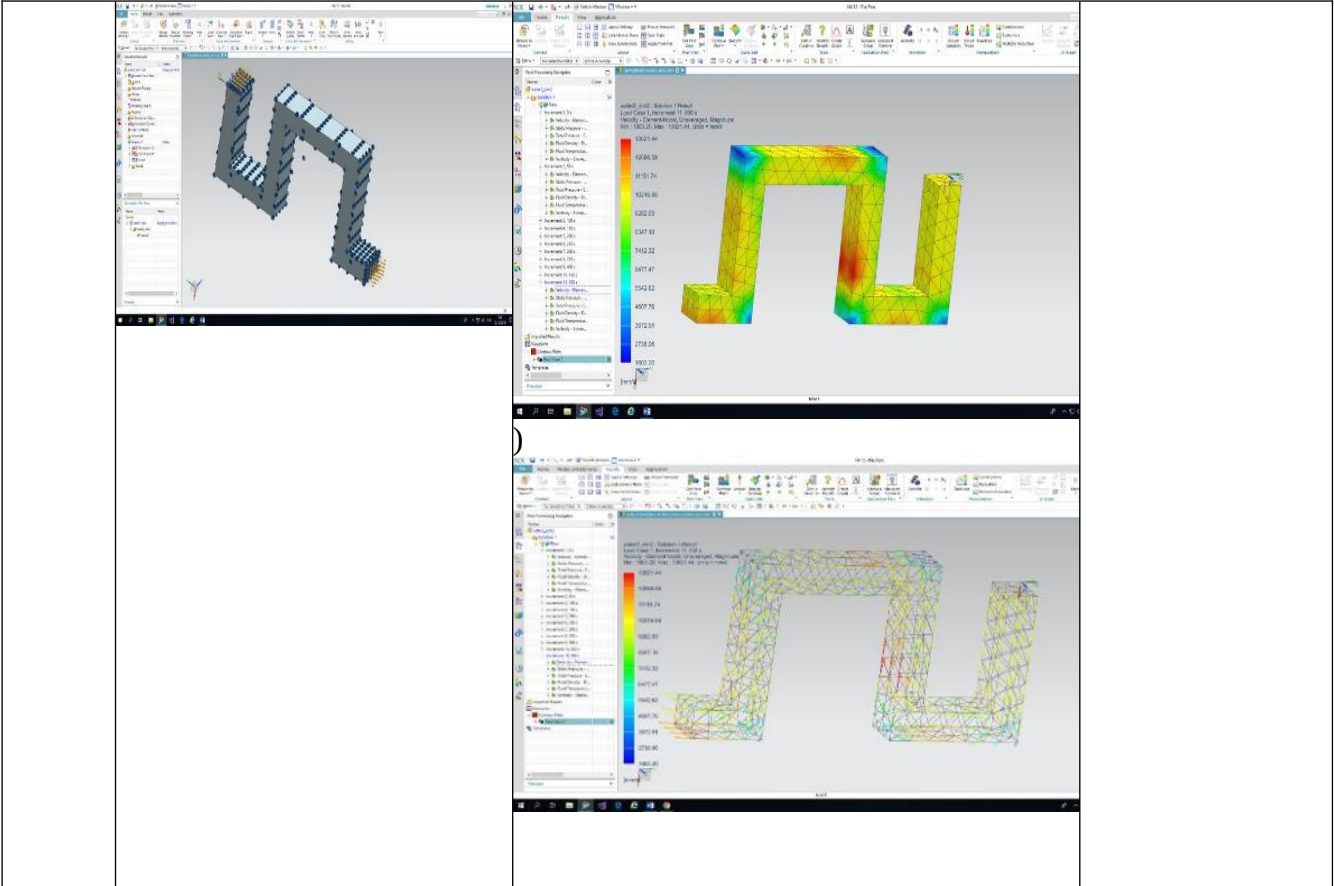
0 1 . 0 . / /			
. . . 2 / /		- / 3. - / /	
/ 45		688 78	
		2 9 / . ::::: :::::	
		2 :::::	

	<p>5 == 76</p>	<p>6</p> <p>6 .</p> <p>5=62</p> <p>1 /</p> <p>4</p> <p>- 4</p>  <p>)</p> <p>/ . - /</p>	
5	<p>. /</p> <p>(3 ,</p> <p>/ . 3.</p>  <p>1 1</p> <p>5= /</p> <p>/ . °C</p>	<p>56</p> <p>86 . a \</p> <p>76 2 / / 4</p> <p>6</p> <p>6 2 / 2 2 . 4</p> <p>0 6 /</p> <p>6</p> <p>T6</p> <p>6 .</p> <p>6 2 4</p> <p>- 4</p> <p>1 /</p>	




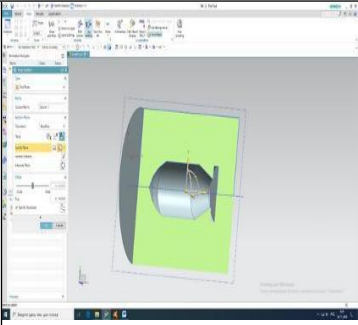
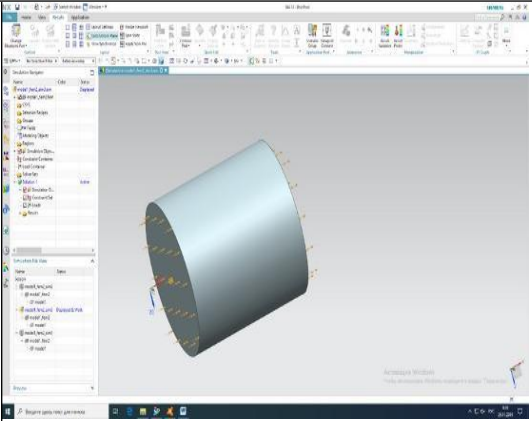
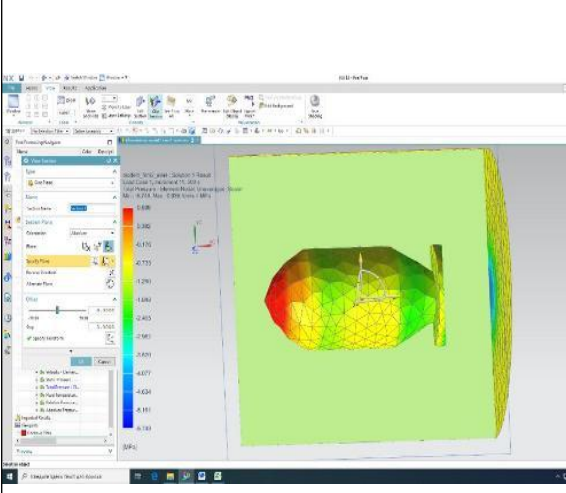
() ,

0	1	2	3	4	5	6	7	8	9	10
1	2	3	4	5	6	7	8	9	10	11
2	3	4	5	6	7	8	9	10	11	12
3	4	5	6	7	8	9	10	11	12	13
4	5	6	7	8	9	10	11	12	13	14
5	6	7	8	9	10	11	12	13	14	15
6	7	8	9	10	11	12	13	14	15	16
7	8	9	10	11	12	13	14	15	16	17
8	9	10	11	12	13	14	15	16	17	18
9	10	11	12	13	14	15	16	17	18	19
10	11	12	13	14	15	16	17	18	19	20



<p>P</p> <p>0</p> <p>2</p> <p>0</p> <p>(/ . 3</p> <p>3</p> <p>,6 / 8=5 6</p> <p>6 8=</p> <p>6 55==</p>	56	86	.	a
	76 2	/	/	4
6	/	/	4	
6 2	/	.	4	
49 /	9			
6 2	/	2 2	4	
T6 2	/			
0 6				
6				
6 .				
5=62			4	
			- 4	
1 /				

			
$\frac{0}{1} \cdot \frac{1}{2} = \frac{0}{2}$		$\frac{0}{1} \cdot \frac{1}{2} = \frac{0}{2}$	
$\frac{0}{1} \cdot \frac{1}{2} = \frac{0}{2}$		$\frac{0}{1} \cdot \frac{1}{2} = \frac{0}{2}$	
$\frac{0}{1} \cdot \frac{1}{2} = \frac{0}{2}$		$\frac{0}{1} \cdot \frac{1}{2} = \frac{0}{2}$	

		<p style="text-align: center;">1</p>
<p style="text-align: center;">%</p>	 <p style="text-align: center;">1</p>	<p style="text-align: center;">%</p>

0 %		
(1 5 ,		5



()) ,

1 2 3 -			
4	6	2 .	2 ;

, 3

. 3

, . -

, . . 3 3.

, . 1

, . . 3 3 4

. 3 3 4

, . - 3 . 4

, . 3 . - 3 . 1

, . .

, . . 3. 4

1 3 . .. 3. 1 4

, - 3 . 4

, 1. 3 . - 3 .

, 1 .

, . . 1

, . 3 3 3 4

, 1 . 3 . 3 4

, . 3 .

, . 1

, . .

3. 4

3 6 4

. 1. 3. . 6 4

. 6



()) ,

0	1	0	2	3
45	68	78	2	9
				2

4 , 8 , 8 , : 8 9 8 , : .7:
 8, - 9, 0: , 799 97

4

D . - . 3 4 . 6 . 3
 . 1 . 6 .

- 56 2 1 1 4
- 86 2) 6
- 76
- 6 . 6
- 6 2 1
- C6 2
- 6 2
- A6 2
- c6 2
- 5 6 2 .
- 556 2 .
- 586 2
- 576 2
- 5 6 2
- 5 6 2 -
- 5C6 2
- 5 6 2
- 5A6 2 1
- 5c6 2
- 8 6 5 (5 ,
- 856 . 1 . 1 (ao 4 4 ao ,
- 886 . (a a,
- 876
- 8 6 0 1
- 8 6)
- 8C6



" () ,			
0	1	0	2
))			
" / 45	68A 78	2 9 / . "	2

8T6 . /
 8A6 / /
 8c6 . / / "E / /
 7 6 " . / E " . 1
 756 . . . 1 1 - 1 . 0
 786 . 1 6
 776 4 M
 7 62 " / 1 6
 7 62 " . . / 19 / 6
 7C62 " . . / 9 9 /
 7T2 " . . /) 9 9 /
 7A62 " . . / 5 4 9 /
 7c62 " . . / 8 4 9 /
 62 " . . / 7 4 9 /
 56 " " . zM
 86 " " .
 hm MzM
 76 / "0 / (M hX X ,
 62 " . . / 49 / /
 (i a,6
 2 " . . /
 / / (u M XM a,
 C62 " . . / / "0 (hX X
 X a
 T62 " . . / / hm M zM
 A62 " . . / / zM
 c62 " . . / / 1
 62 " . " / / / X X
 56 3. / " / . 1 -a
 86 . .
 76 "0
 6 " .
 6 0
 C6 1 1
 T6 /
 A6 " 3
 c6 "



()) ,

0	1	2	0	3
		6	2 9 . ::::: ::::	2 ; ::::

6
 6
 6 9 11 6

4

6

0	2	0	
	0	D	
D	D	D	D
1	1	1	1
6	6	6	6
(2 ,3	(2 ,3	(2 ,3	(2 ,3
1	1	1	1
9	9	9	9
9	9	9	9
1	1	1	1
13	13	13	13
9	9	9	9
3	3	3	3
6	6	6	6
1	1	1	1
3.	3.	3.	3.
3.	3.	3.	3.
3	3	3	3
6	6	6	6
D	D	D	D



()) ,

0	1	2	0	3
				2
				2

3.	3.		
0	0	0	0

2			
	1	1	1
	1	1	1
	1	1	1

